

The logo consists of the lowercase letters 'schw' in a bold, blue, sans-serif font. The letter 'o' is stylized with a white water drop shape inside it.

schw

The background features several overlapping, wavy, blue shapes in various shades of blue, creating a sense of movement and depth, reminiscent of water or waves.

上海彰华膜净化有限公司

Shanghai Chang Hua Water Purification Co., Ltd.

Total Soutions For Your Water Problems

A small, light blue, leaf-like shape is positioned at the bottom right of the page, mirroring the larger shapes in the background.

公司介绍

Company Introduction



1992 年落成之上海一代厂

上海彰华膜净化有限公司 (Shanghai Chang Hua Water purification Co., Ltd., SCHW) 成立于1992年, 是台湾溢泰集团进军大陆工业水处理市场的滩头堡。20余载的苦心经营, 在大陆创造出超过1000个以上的海量业绩, 服务的客户更是遍布于中国, 是最早从事超纯水研究及专业化超纯水系统生产商之一。

公司在南京拥有占地30亩的生产基地, 设有储备充足的零配件仓库; 设计与业务部门在上海办公室。服务行业遍及半导体集成电路、面板、太阳能、制药、化工、食品饮料等各种不同需求的制程用水、废水处理、中水回用, 公用事业部分也跨及污水、雨水回收等。从设计、销售、制造、工程安装以及售后服务, 持续为客户提供迅速、准确、完善的一流服务。

公司不断地追求最新水处理相关技术与工程技术, 帮助客户以最经济、合理的成本来获得最稳定有效的结果。

Shanghai Chang Hua Water Purification Co., Ltd. (SCHW) was founded in 1992, It is the pioneer for Taiwan Kemflo Group to enter China's industrial water treatment market. After 20+ years' operation, SCHW has successfully completed more than 1,000 projects with clients all over China. SCHW is one of the earliest companies who served in China's Ultra-Pure Water (UPW) processing practice & research, and the manufacturing of UPW related equipment.

SCHW own two hectares factory in Nanjing, our warehouse filled with sufficient inventory of spare parts; SCHW provides and executes the engineering proposal for various industries, includes semiconductor, LCD panel, solar energy, pharmaceutical, chemical, food and beverage etc...

SCHW keep pursuing the state of the art water technologies and apply them to our design, so we benefit our clients with the most efficient, ecological, and stable solutions for all their water needs!.

业界资质认证

Certification



- 全国外商投资先进企业
- 上海市政府高科技产业
- 机电设备安装工程专业承包三级
- 环保工程专业承包三级企业
- 国家安全生产标准化生产三级企业
- SGS ISO-9001 国际品保证
- OHSAS18001: 2007健康安全管理体系认证
- ISO14001:2004国际环境体系认证
- China National advanced foreign-invested enterprises
- High-tech industry of Shanghai Government
- Mechanical and electrical equipment installation engineering professional contractor: Level III
- Environmental engineering professional contractor: Level III
- National safety standardized production enterprises
- SGS ISO-9001 international quality assurance
- OHSAS18001:
- ISO14001:2004

研发与实验室能力

R&D Lab

台湾/大陆 实验室仪器设备与检测能力:

- 协助原水/处理设备小试/中试水质测试, 设备处理效能检测
- 台湾实验室以FDA/NSF 实验室基础设置
- 大陆实验室CNAS 认证

Taiwan/China Lab capability & instruments

- Lab to analyze source/treated water to verify the effectiveness of the process/equipment
- Taiwan Lab was constructed against NSF Lab capability
- China Lab "CNAS" certified

- 全自动消化汞分析仪(RA-4500) 重金属汞
- 液相层析与三段四极杆质谱仪 HPLC/MS/MS Liquid chromatography-mass spectrometry
- 超高效能液相层析仪(含荧光侦测器) HPLC/FLD Liquid chromatography-mass spectrometry (Carbofuran)
- 超高效能液相层析仪(含光电二极体阵列侦测器) HPLC/UV Liquid chromatography-mass spectrometry
- 气相层析仪(含电子捕捉器主体) GC-ECD GC with Electron Capture Detector 农药检测 Atrazine & 2,4-D
- UV 分析仪(DR6000) Chlorine Analyzer 氯检测
- 7900感应耦合电浆质谱仪 NSF 53 Heavy metal
- 离子层析仪(ICS-6000) Cr6+,Cr3+,F-...
- 感应耦合质谱分析仪ICP-MX Inductively coupled plasma mass spectrometry (Agilent 7700)
- 气相层析质谱分析仪 Gas Chromatography & Mass Spectrometry (Agilent 5975C)
- 液相层析串联式质谱仪 (Liquid chromatography-mass spectrometry LC-MSMS)
- 污泥指数测定仪 SDI Counter (GE Auto SDI)
- 紫外光/可见光光谱仪 UV Spectrophotometer
- TOC仪
- COD消化器
- 便携式pH meter
- 导电度/TDS meter
- 颗粒量测仪 Particulate counter HIAC 8000A &3000A

检测取样台



感应耦合质谱分析仪 ICP-Ms



粒径分析仪



荧光显微镜



气相层析质谱分析仪 GC-Ms

公司使命 愿景与价值观

Our Mission, Vision and Values



使命

从设计、销售、制造、工程安装以及售后服务, 持续为客户提供迅速、准确、完善的服务,使客户能以最经济、合理的成本获得最有效的结果.

愿景

打造客户满意度第一的水处理工程公司.

员工价值观

视“公正尊重、诚信合作、追求卓越”为公司员工的价值观; 将目标管理、过程管理、持续改进作为公司管理体系的三大支柱; 坚持“以人为本”引入员工职业发展规划.

Mission:

To provide clients with fast & accurate services from design, sales, manufacturing, engineering installation and after-sales. These services provide clients satisfactory results with the most affordable costs.

Vision

A water treatment engineering company with customer satisfaction as primary goal.

Employee Value

Employee guide rule: "Fair, Respect, Honesty, Cooperation, Excellence pursuing"

经营内容

Management content

各式水处理系统、集成设备 系统/设备出售

租赁服务

- 月租模式
- 水费模式

Modularized Water Treatment

Equipment or system sales

Equipment rental

- Monthly rental model
- "Pay per use" model

专案工程服务

- 前期咨询
- 工程设计
- 设备安装
- 系统调试
- 运行维护

Water Treatment Project Services

- Consulting
- Project design
- Equipment installation
- System commission
- Operation and maintenance

耗材与售后

- C/EDI 清洗再生
- RO/UF 膜清洗服务
- 设备维护与保养
- 各式耗材与零件
- 托管运营

Maintenance & Parts Services

- C/EDI cleaning & regeneration
- RO/UF membranes cleaning
- Equipment maintenance service
- Components & consumables
- Contracted operation

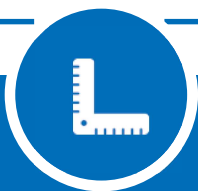
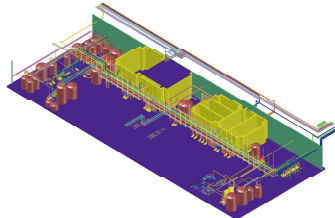


套装设备标准控制功能



产品/服务特点

Products/services features



标准化:

标准化工艺设计, 处理能力一致, 外形尺寸统一, 同一机型内部零件可相互通用, 控制系统同时标准化, 可增加云端监控

Standardization:

Design & built with standardized concept, by using pre-defined design & components to help speed up the construction process, easy of spare parts inventory controls. Pre-defined control system with cloud capability, help managing your water 24/7, anywhere!



模块化:

柜式/栈板式设计, 可根据处理工艺的不同, 随意组合用

Modularization:

Element skid mount design, providing maximum flexibility for your systems.



预制式:

使用BIM 模式, 大量工厂内部预制, 现场只需简单的管道连接, 大大提升工程品质, 减少现场安装时间和人工

技术专长

Technical Expertise



电子半导体超纯水制程 / Ultra-purified water treatment for electronic semiconductor

客户reference: 德州仪器 (菲律宾) Texas Instruments (PH.) INC
 重庆万国半导体科技 Chongqing AOSMD Semiconductor
 上海新昇半导体科技 Shanghai Zing Semiconductor



各行业工业废水处理 / Industrial wastewater treatment for various industries

客户reference: 昆山之奇美材料科技 Chimei Materials Technology
 重庆万国半导体科技 Chongqing AOSMD Semiconductor
 福建兆元光电 Fujian Prima Optoelectronics



食品医疗用纯水制程 / Purified water treatment for food and medical

客户reference: 上海爱之味食品 Shanghai AGV Foods
 正大天晴制药 Chia Tai Tian Qing pharmaceutical



回用水处理 / Recycling water treatment

客户reference: 京隆科技 (苏州) King Long Technology (Suzhou)
 太仓明克捷 Taicang Mintats



市政污水处理 / Sewage treatment

客户reference: 温岭市污水处理二期 Wenling Sewage Treatment Phase II
 朝阳常袋污水处理厂 Chaoyang Changdai Sewage Treatment Plant



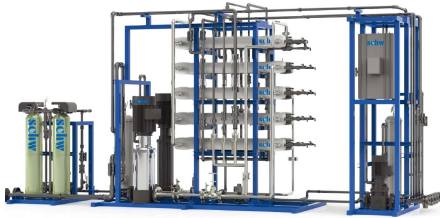
海水淡化 / Sea water desalination

客户reference: Aguas de Antofagasta
 Las Salinas



农畜养殖用水处理 / Farming & Aquaculture

客户reference: 澳洲Atherton农场 Australia Atherton Farm



Factory Pre-fabrication:
 Using BIM concept to design and prefabricated most equipment and piping works in factory. These will provide our clients with the best assembly quality with minimized job site labor and material control.

高可扩充性:
 预留串/并接口, 可快速升级水处理系统单位处理能力和出水水质

Expansion capability:
 Reserved serial/parallel extension joints, easy for clients to upgrade your water capacity and quality.

远程监控:
 可通过4G和WIFI传输运行数据。客户通过可视化数据, 随时随地了解设备运行状况。

Remote monitoring:
 Data can be transmitted through 4G and WIFI. Visual data can indicate the operation status of equipment anytime and anywhere for clients.



溢泰集团介绍

Kemflo Group Introduction

1978年溢泰成立于台湾屏东，1998年进入大陆市场，2002年在南京设立工厂。多年来，溢泰一直以专业、高品质、不断创新的精神专注于水处理事业领域。『溢泰就是净水』，是我们对水处理品牌的期许。

溢泰始于1978 专注净水40年

Kemflo started in 1978 in the Pingtung Taiwan. In 1998, we entered the Chinese water market and built our first China factory in Nanjing, 2002. For years, Kemflo is always committed to water treatment field under the policy of professional, qualified and innovative. "Kemflo means to pure water" is our brand expect.



溢泰公司水处理品牌
Kemflo Group Water Treatment Brands



KEMFLO 溢泰



schw



schw

www.watertech.sh.cn

上海 • 业务 • 设计

上海市闵行区兴梅路485号中环科技园205室
Room 205, No 485, Xingmei Road, Shanghai, China
+86 21 64103900

南京 • 工务 • 制造 • 仓库

南京市江宁开发区爱涛路19号
No. 19, Aitao Road, Nanjing, China
+86 25 86119722